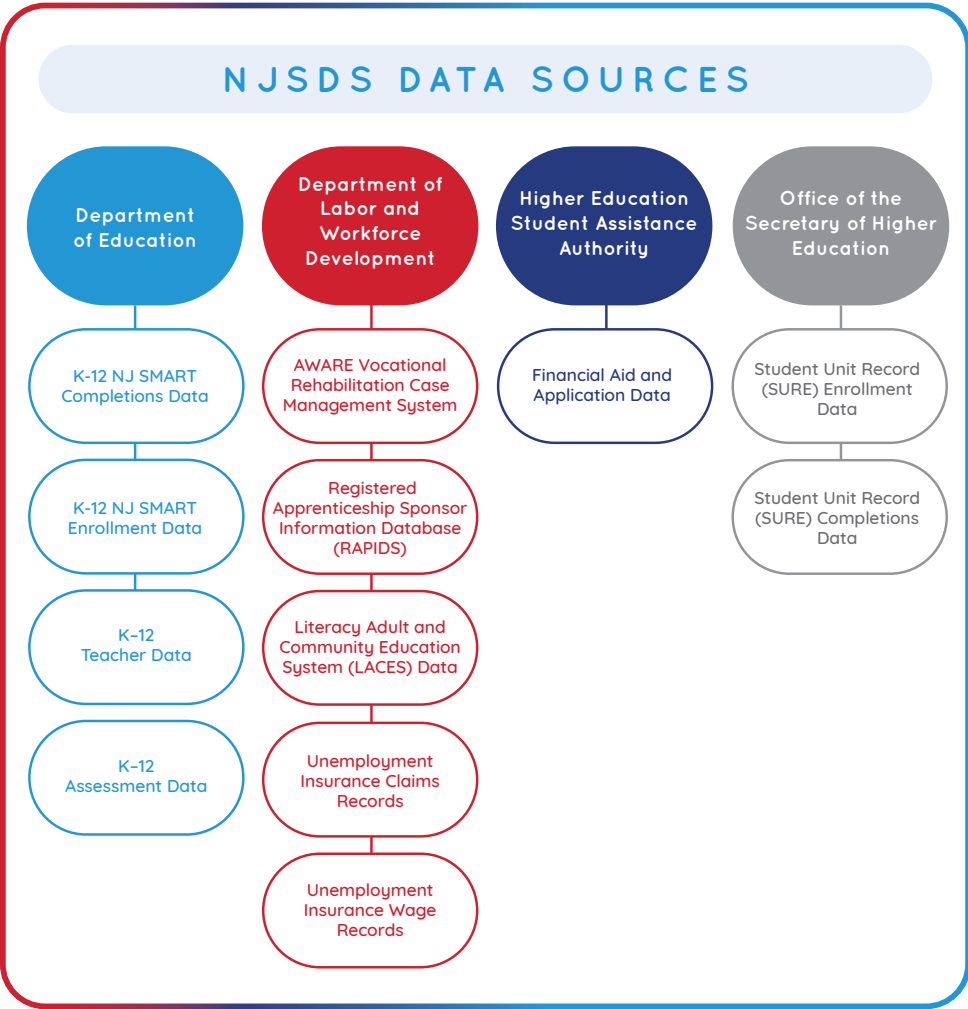


The New Jersey Statewide Data System (NJSDS), formerly the New Jersey Education to Earnings Data System (NJEEDS), is the State of New Jersey's centralized longitudinal data system for public administrative data. Through coordination with partnering state agencies, NJSDS has become a large statewide interagency and intergovernmental platform where data from participating agencies are securely stored to expand access and analysis to improve governance efforts, policymaking, and performance of public initiatives.



2024 YEAR IN REVIEW

Contact us for more information about the New Jersey Statewide Data System.

New Jersey Statewide Data System
Heldrich Center for Workforce Development
Rutgers, The State University of New Jersey
30 Livingston Avenue
New Brunswick, NJ 08901

njsds@ejb.rutgers.edu | njsds.nj.gov



New Jersey Department of Education
New Jersey Department of Labor and Workforce Development
New Jersey Higher Education Student Assistance Authority
New Jersey Office of the Secretary of Higher Education



RUTGERS-NEW BRUNSWICK
Edward J. Bloustein School
of Planning and Public Policy
John J. Heldrich Center for Workforce Development



NEW JERSEY TEACHER WORKFORCE

In 2024, in collaboration with the New Jersey Department of Education, the Heldrich Center for Workforce Development at Rutgers, The State University of New Jersey published the first annual teacher workforce report, *New Jersey’s Teacher Workforce Landscape*. In accordance with the New Jersey teacher workforce legislation enacted in 2022, which mandates the use of NJSDS data to report on the state’s education workforce, this report features key teacher metrics, such as the number of teachers by location and subject area, the number of new teachers compared to the number of those who leave, and the reasons educators have left the field.

Building on this report, the Heldrich Center has been awarded a grant from the Coleridge Initiative’s Democratizing our Data Challenge to expand the analysis to include teacher mobility across state lines. This new initiative will use the New Jersey report as a model and build in a state mobility component. The pilot will collaborate with researchers from Rhode Island and include Rhode Island data, with opportunities to expand to other states in the future.

NJSDS 2024-2027 RESEARCH AGENDA

NJSDS research is guided by a three-year research agenda that identifies priorities and topics that focus on the most-needed research areas and is informed by New Jersey policy needs and stakeholder feedback. The 2024–2027 NJSDS research agenda covers three priority and three research areas. The priorities include promoting cross-sector data and accuracy, analyzing subgroup experiences, and ensuring stakeholder collaboration. The research areas include exploring pathways through services and systems, assessing outcomes of experiences, and exploring predictive analytics.

NJSDS REPORTS

The following products were released on the NJSDS website in 2024:

- **Descriptive Analysis of New Jersey’s Educational Opportunity Fund Program Using the New Jersey Statewide Data System:** Examines the educational and employment outcomes of students who participated in the New Jersey Educational Opportunity Fund program. The study investigates the graduation rates, workforce participation, and earnings of students who completed either an associate or bachelor’s degree after 2013.
- **Dual-Enrollment Participation and Outcomes in New Jersey:** A two-part series that studies the participation and outcomes of New Jersey’s dual-enrollment programs. The first report in the series, *Review of Dual-Enrollment Participation and Outcomes in New Jersey*, includes a review of the two primary data sources on the topic, while the second report, *Exploring Postsecondary Outcomes of Dual-Enrollment Participation in New Jersey*, provides insights into the long-term educational outcomes of those enrolled.
- **New Jersey Unemployment Insurance Dashboard:** An interactive dashboard that uses linked longitudinal administrative data to show the characteristics of individuals with initial unemployment claims between 2014 and 2022.
- **Using the New Jersey Statewide Data System to Explore Educational Pathways:** Analyzes degree programs and the experiences of students in New Jersey who earn sequential postsecondary credentials.
- **A Review of State Postsecondary Attainment Goals and Progress:** Details the key strategies, challenges, milestones, and programs New Jersey has implemented to achieve the attainment goal of 65% of state residents having a postsecondary degree or credential by 2025. The report also examines the national landscape of initiatives and progress undertaken by other states.
- **Where Students Go: Examining Outmigration in New Jersey:** Assesses the gaps in NJSDS that limit the ability to track New Jersey high school graduates who pursue higher education and/or employment opportunities in other states. This report also illustrates that supplementing administrative data from state agencies with additional data sources is necessary to inform future data analyses of the migration patterns of those who attend school or work outside of the state.

Visit <https://njsds.nj.gov/research-products/> to read NJSDS products.

DATA ACCESS

A pilot program for external researcher access to de-identified NJSDS data concluded in 2024. The data access processes of application review, agreements, secure workspaces, and product review have been completed and NJSDS will be moving forward with providing external researchers access in early 2025. In order to use the system, researchers will need to meet certain requirements and topic areas must align with the current NJSDS research agenda. Data requests will be reviewed and approved by the NJSDS Executive Leadership Committee before access is permitted. Research using NJSDS will be spotlighted on the NJSDS website and shared via webinars and annual convenings.

SYSTEM ADMINISTRATION

STAFFING

NJSDS is supported by the contributions of 13 Heldrich Center staff members, including full-time researchers, postdoctoral associates, graduate research assistants, and IT and administrative staff. Researchers on the NJSDS team have extensive expertise that includes secondary and postsecondary education, social welfare, workforce development, and the impact of artificial intelligence, among other topics. This experience and expertise help strengthen the abilities of NJSDS in analyses related to governance, policymaking, and public initiative efforts.

BUDGET

NJSDS funding and operating expenses have varied year over year, but have stabilized as the system matures. NJSDS is primarily supported through partner agency contributions and enhanced through federal and foundation grants. Currently, operating expenses are estimated to be around \$1.7 million annually. The NJSDS budget is split into two main categories: base costs (including items such as governance, database operations, and training and outreach) and agency research activities (which include report development and dissemination).

